

**PLANNING COMMITTEE
ADDENDUM
Item B Presentation –
27-31 Church Street, Brighton**

2.00PM, WEDNESDAY, 7 JULY 2021

COUNCIL CHAMBER, HOVE TOWN HALL

Agendas and minutes are published on the council's website www.brighton-hove.gov.uk. Agendas are available to view five working days prior to the meeting date.

Electronic agendas can also be accessed through our meetings app available through [ModernGov: iOS/Windows/Android](#)

This agenda and all accompanying reports are printed on recycled paper

ADDENDUM

ITEM		Page
B	BH2020/02801 - 27-31 Church Street, Brighton - Full Planning	1 - 26

27-31 Church Street

BH2020/02801



**Brighton & Hove
City Council**

Application Description

- The application seeks permission for the erection of a four storey office block with landscaping to the rear including cycle parking and amenity areas for occupants.



Brighton & Hove
City Council

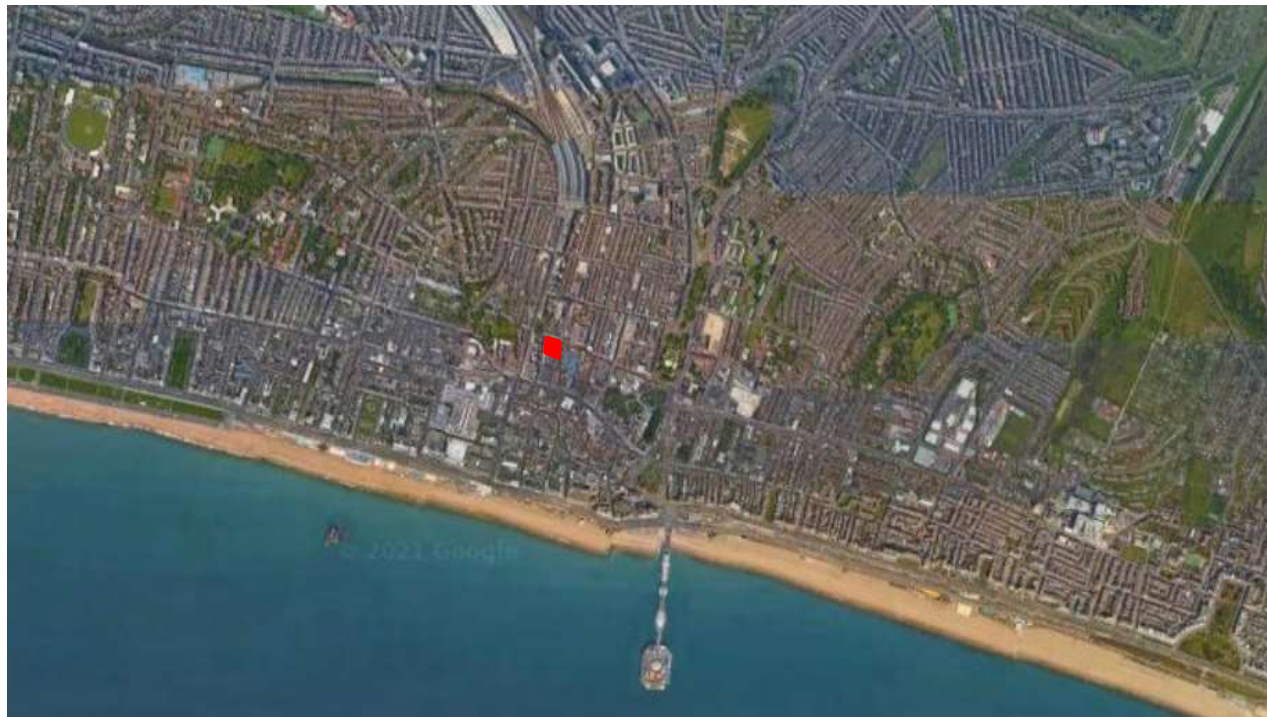
Planning History

- **93/1046/FP**- Erection of 5 storey building comprising basement car park, A1, A2 or A3 unit (ground) remainder as offices. Amendment to 89/0749 including raising floor levels, elevation changes and general re-arrangements. Approved and commenced.
- **BH2011/02401** - Erection of mixed-use development comprising 9no residential dwellings, retail and offices incorporating basement level parking and associated landscaping. Allowed on appeal and commenced.

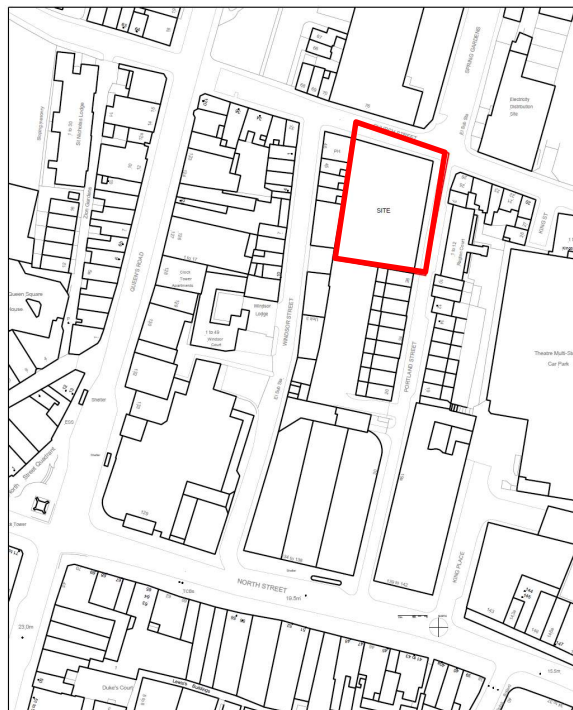


Brighton & Hove
City Council

Map of application site



Location Plan



20013 DL(PL) 01



Aerial photo(s) of site



Brighton & Hove
City Council

3D Aerial photo of site



Brighton & Hove
City Council

Street photo of site

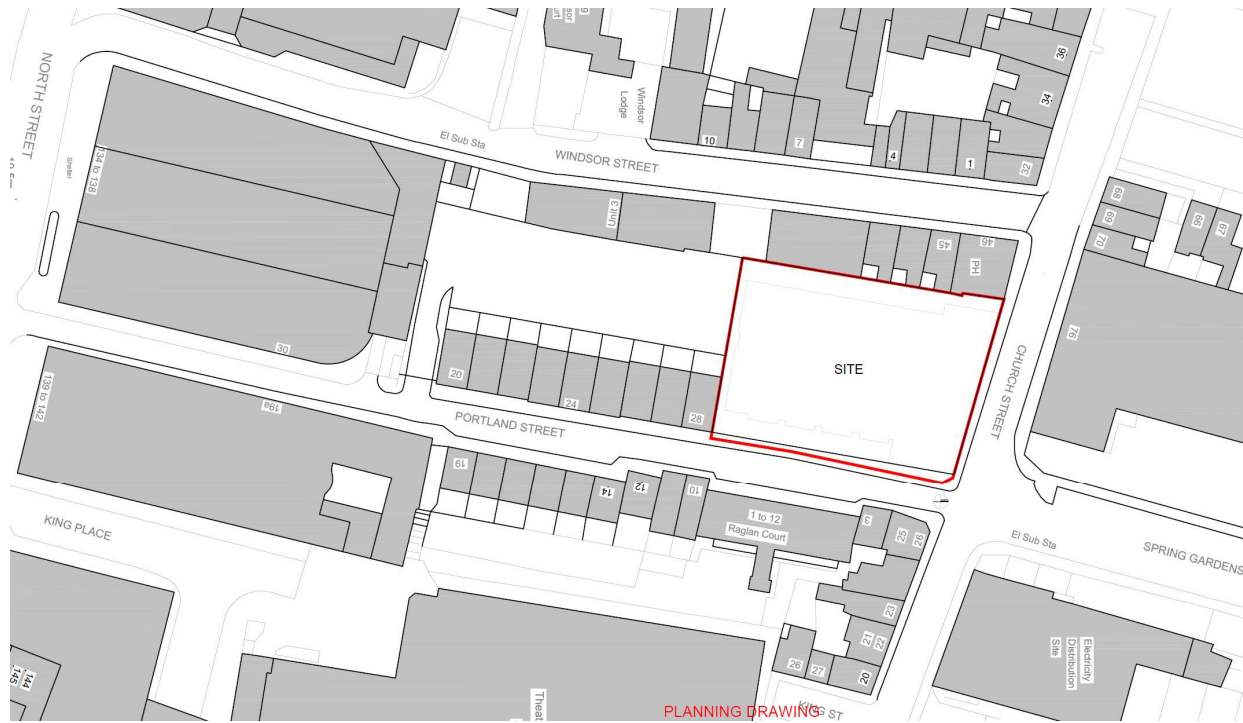


Brighton & Hove
City Council

Other photo of site: East along Portland Street



Existing Block Plan

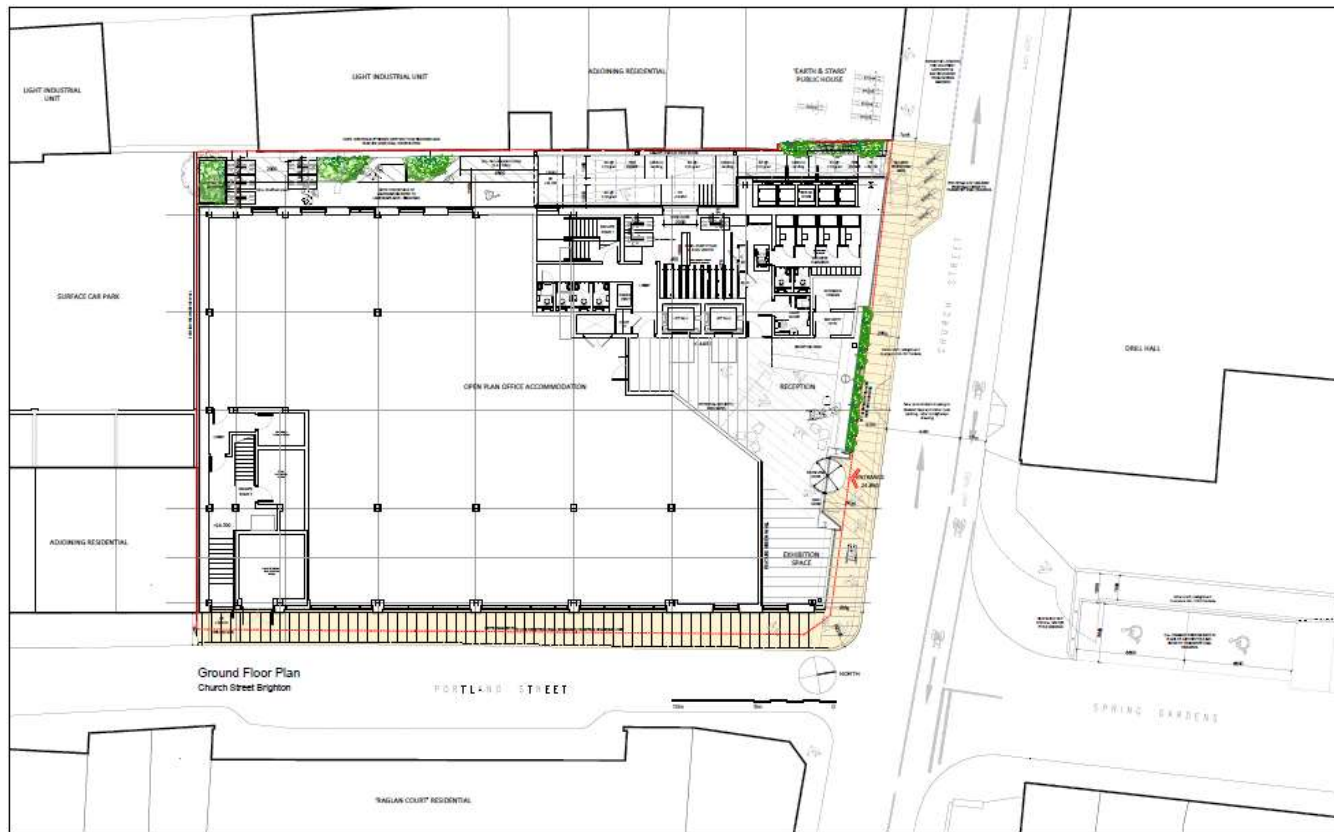


10

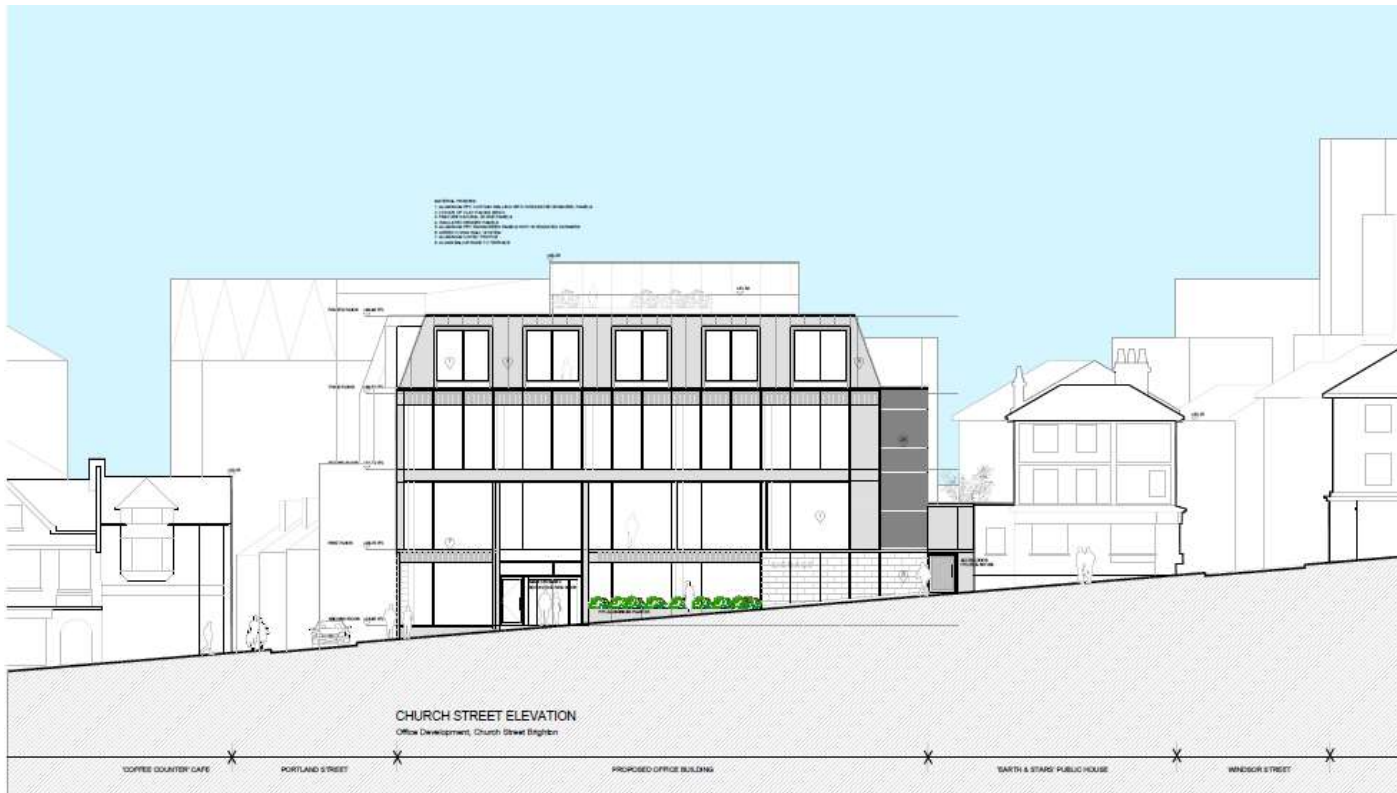
20013 DL(PL) 10



Proposed Ground Floor Plan



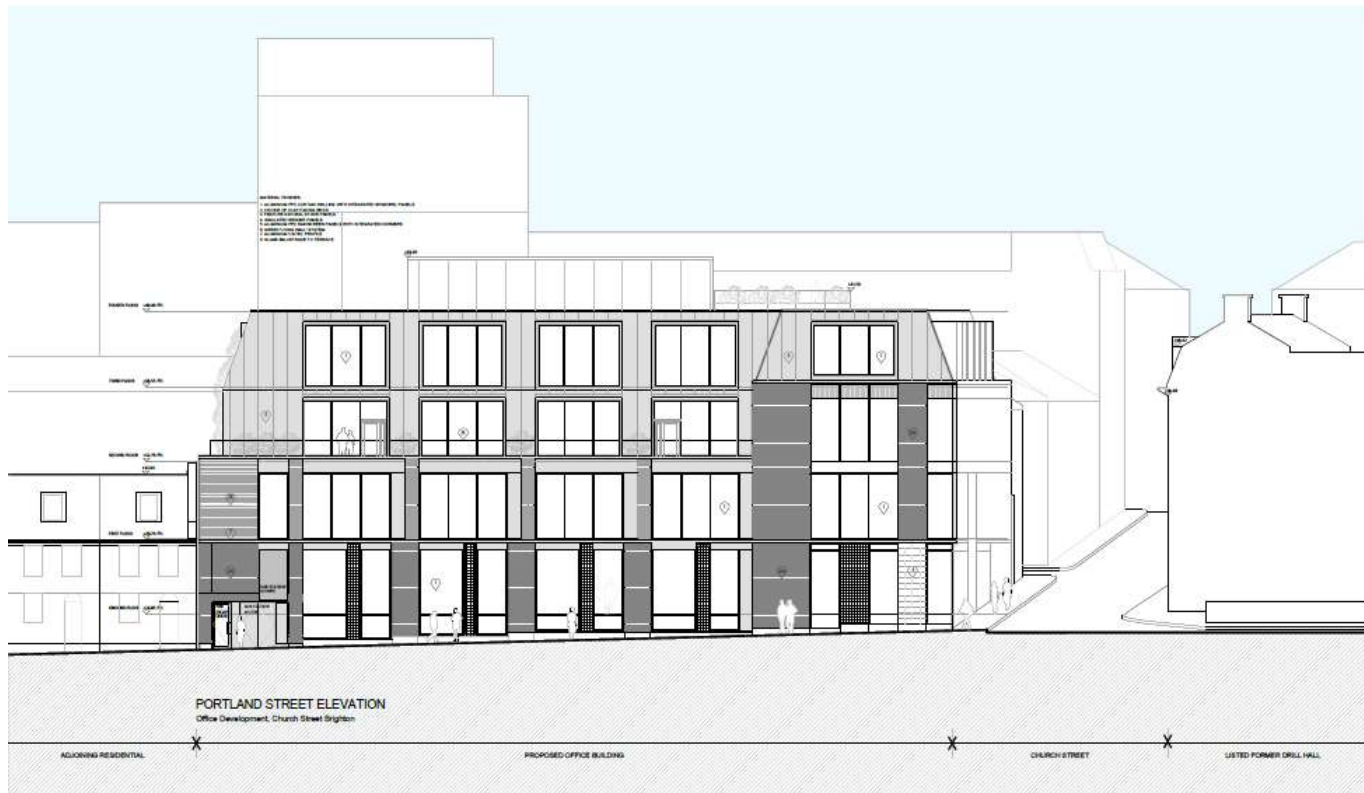
Proposed North (Church Street) Elevation



20013 DL(PL) 200 REV 02



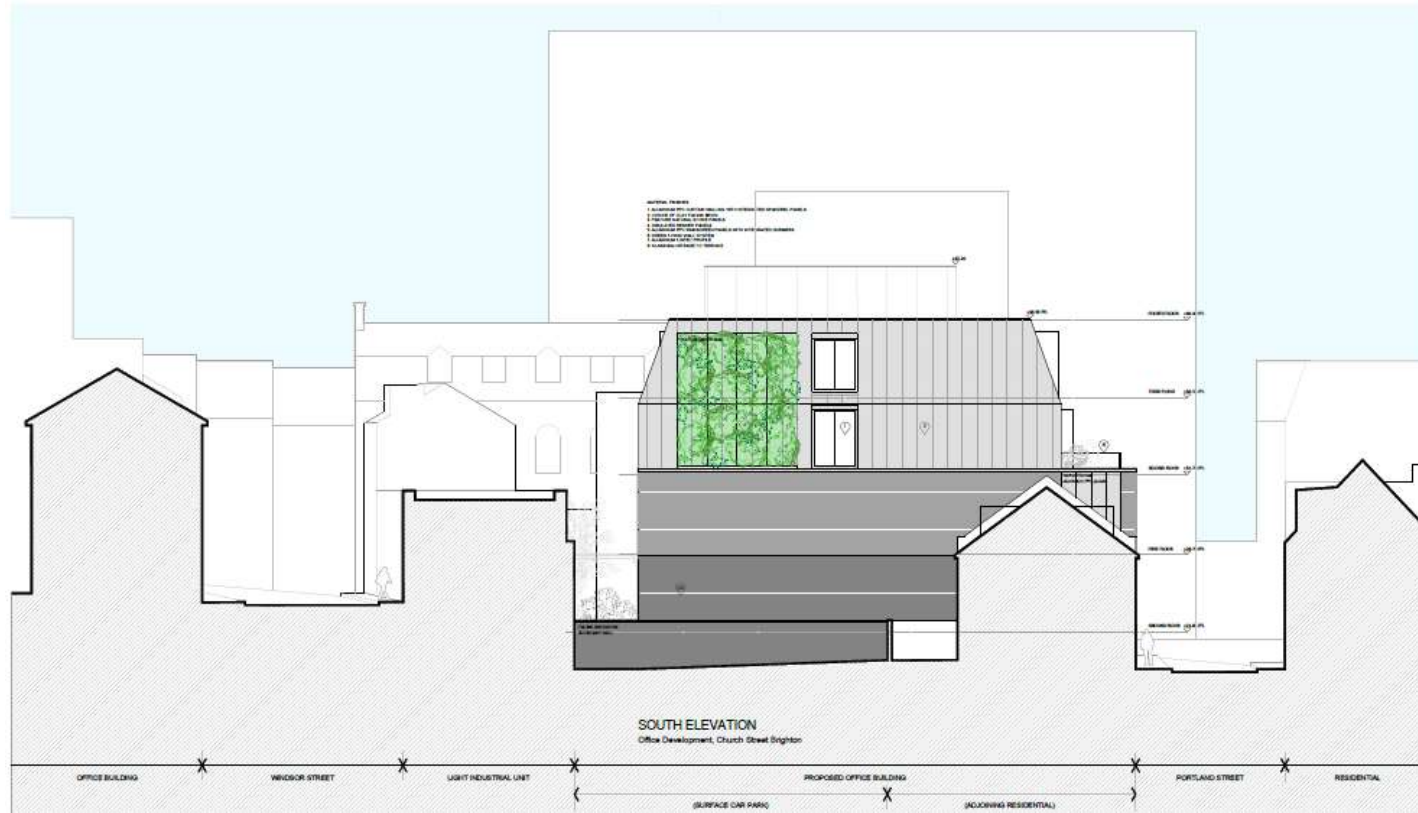
Proposed East (Portland Street) Elevation



20013 DL(PL) 201 REV 02



Proposed South Side Elevation



14

20013 DL(PL) 202 REV 02



Proposed West Rear Elevation

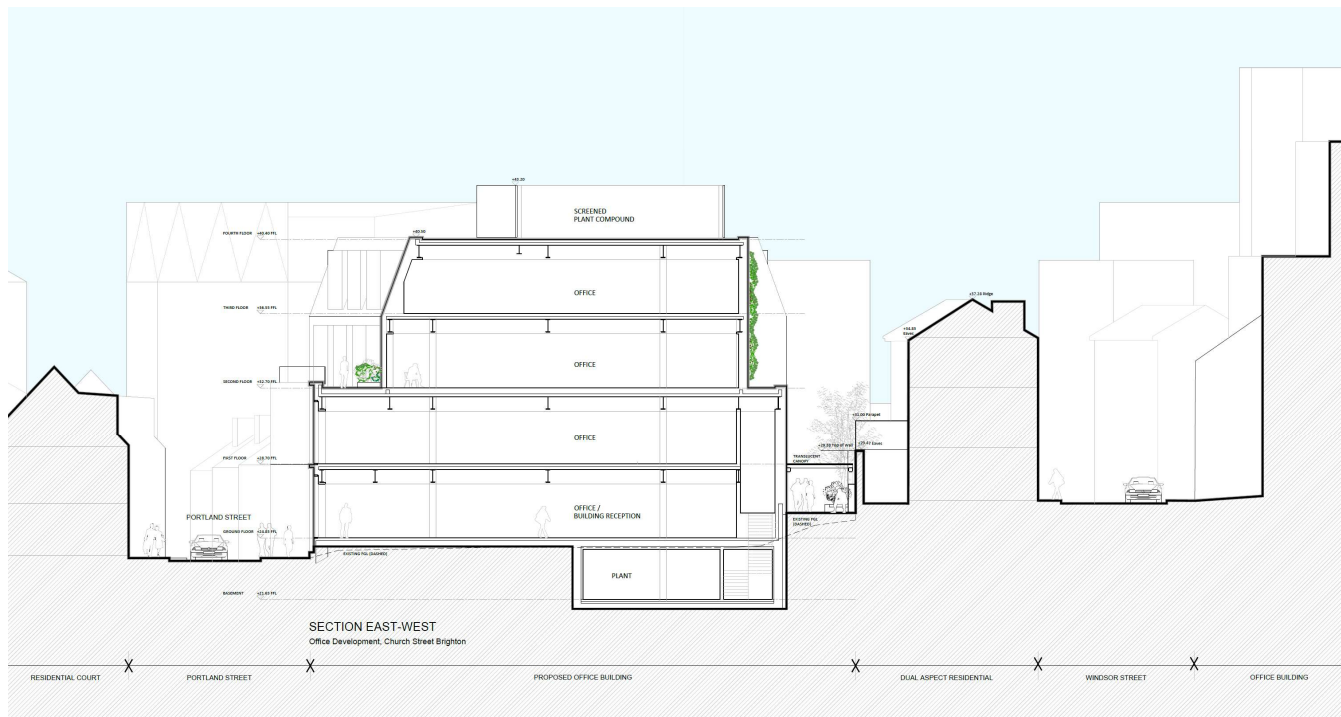


15

ID



Proposed Site Section(s)

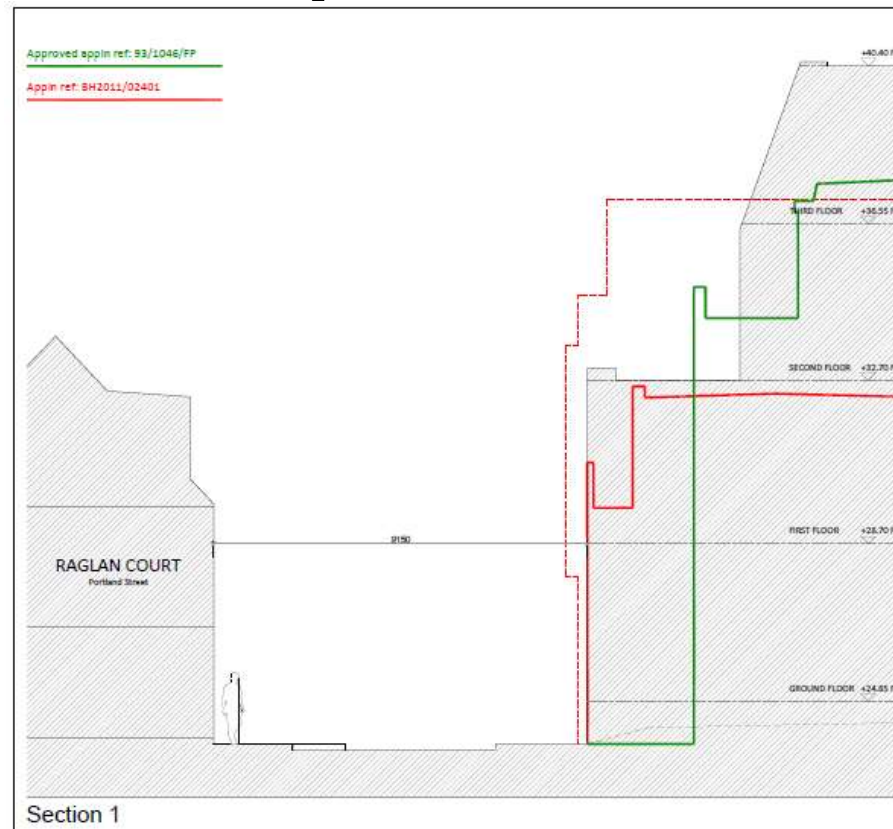


16

DL(PL)150-02



Proposed Site Section vs Extant Permissions (Portland Street)

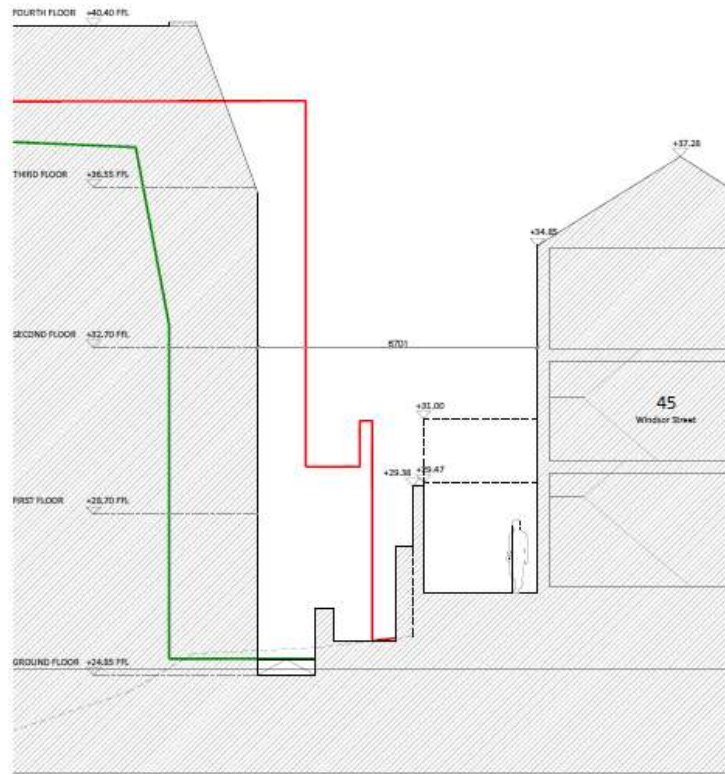


17

ID



Proposed Site Section vs Extant Permissions (Windsor Street)



Section 2

Elevations of extant scheme 93/1046/FP



Visuals of extant scheme BH2011/02401 (Church Street)



Brighton & Hove
City Council

Visuals of extant scheme BH2011/02401 (Spring Gardens)



Brighton & Hove
City Council

Proposed Visual From Spring Gardens



Brighton & Hove
City Council

Proposed Visual Church Street



Brighton & Hove
City Council

Key Considerations in the Application

- Principle of wholly office development on site.
- Impact on neighbouring amenity
- Sustainable Transport
- Ecology
- Sustainability/Air Quality



Brighton & Hove
City Council

S106 table

Employment:

- Submission of an Employment & Training Strategy
- A financial contribution of £36,250 towards the Local Employment Scheme

Five Year Travel Plan

Highways Works

- Widening of footway along the Church Street frontage
- Relocating 1 x motorcycle parking bay (currently on Church St) to accommodate the above
- Introducing 2 x on-street blue badge bays on Spring Gardens
- Associated build-out on Church Street to include 8 no. visitor cycle parking
- Relocating 1 x motorcycle parking bay (currently on Spring Gardens) to accommodate the above
- Widening the footway along the Portland Street frontage
- Removing a redundant vehicle crossover on Portland Street
- Repaving/ surfacing of the footways immediately abutting the site
- Removal of street furniture including existing lighting column at Church Street/ Portland Street junction
- Dropped kerbs and tactile paving Church Street/ Portland Street junction
- Highway structure checks (given proximity to the basement).

Access Agreements

- Requirement to enter into an appropriate mechanism to ensure that the finalized highway solution on Portland Street can also be used by the public and maintained, the details of which will be agreed between the LPA and the developer.

Conclusion and Planning Balance

- The proposed development would bring forward the use of a site which has been vacant for a number of years with employment floorspace in a central, sustainable location.
- The development would have an impact on neighbouring residential amenity; however the wider benefits associated redeveloping the site, and the provision of grade A office space are considered to outweigh this harm.
- **Recommendation – Approve.**



Brighton & Hove
City Council